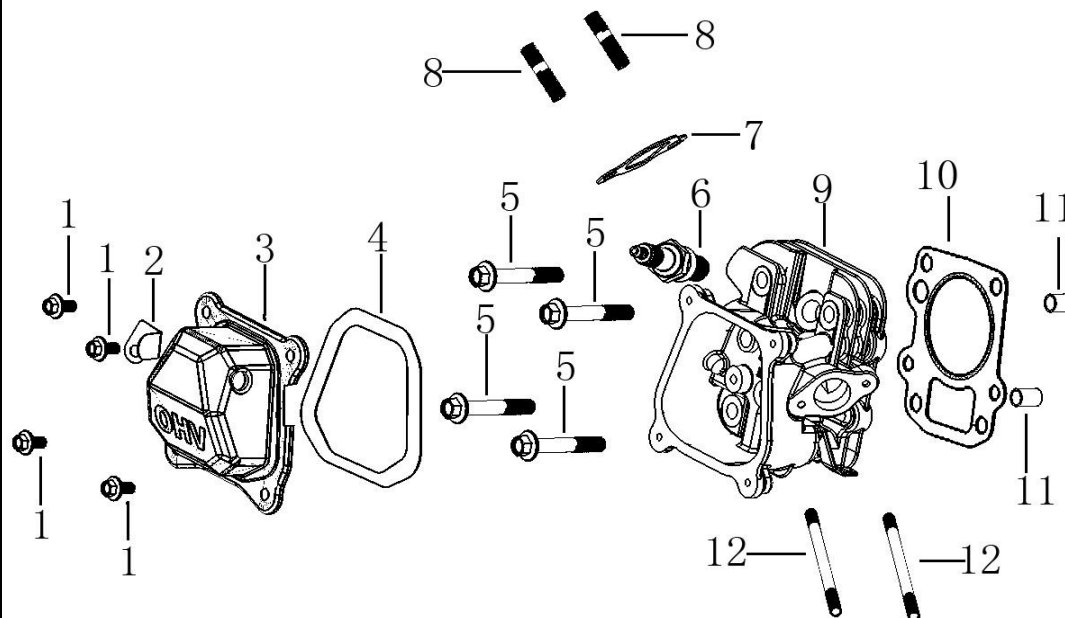


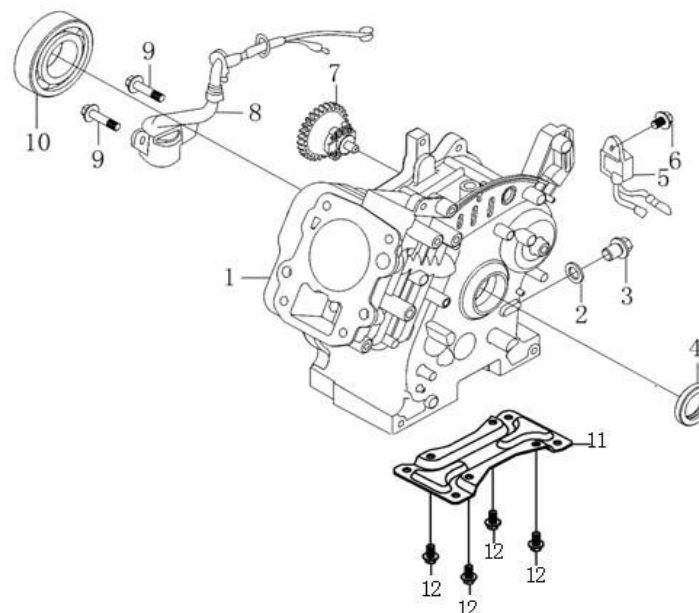
# EXPLOZIE PIESE DE SCHIMB Motor PC60L

version: 10.2020

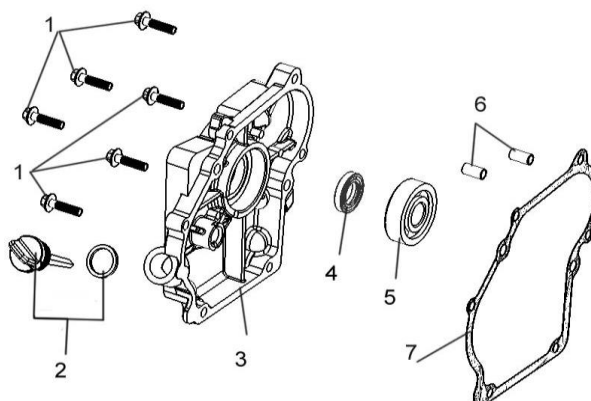
(CYLINDER HEAD)			Reqd. QTY
No.	Description		
LC152F-1-A01	Hexagon bolt with flange		4
LC152F-1-A02	Cable cleat		1
LC152F-1-A03	Cylinder head cover assy		1
LC152F-1-A04	Gasket for cylinder head cover		1
LC152F-1-A05	Hexagon bolt with flange		4
LC152F-1-A06	Spark plug		1
LC152F-1-A07	Outlet gasket		1
LC152F-1-A08	Stud		2
LC152F-1-A09	Cylinder head		1
LC152F-1-A10	Gasket for cylinder head		1
LC152F-1-A11	ocation pin		2
LC152F-1-A12	Stud		2



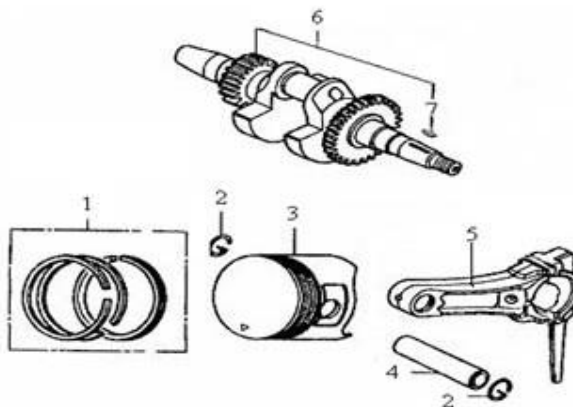
(CRANK CASE)		
No.	Description	Reqd. QTY
LC152F-1-B01	Crankcase body	1
LC152F-1-B02	Flat washer	1
LC152F-1-B03	Sealing plug screw	1
LC152F-1-B04	Oil seal	1
LC152F-1-B05	Engine oil protector	1
LC152F-1-B06	Hexagon bolt with flange	1
LC152F-1-B07	Components of governor gear	1
LC152F-1-B08	Oil level sensor	1
LC152F-1-B09	Hexagon bolt with flange	2
LC152F-1-B10	Bearing	1
LC152F-1-B11	Engine base	1
LC152F-1-B12	Hexagon bolt with flange	4



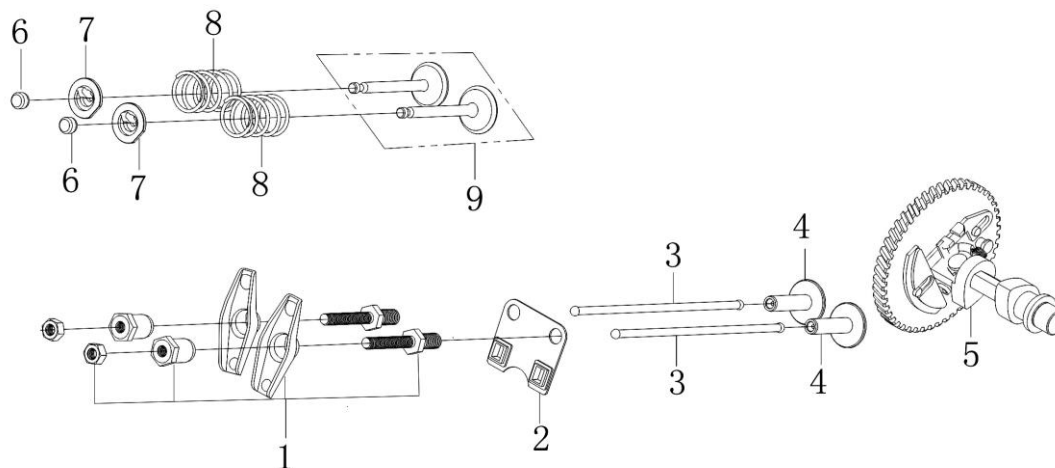
( CRANK CASE COVER )		
No.	Description	Reqd. QTY
LC152F-1-C01	Hexagon bolt with flange	6
LC152F-1-C02	Oil rule combination	1
LC152F-1-C03	Crankcase cover	1
LC152F-1-C04	Oil seal	1
LC152F-1-C05	Bearing	1
LC152F-1-C06	ocation pin	2
LC152F-1-C07	Crankcase cover gasket	1



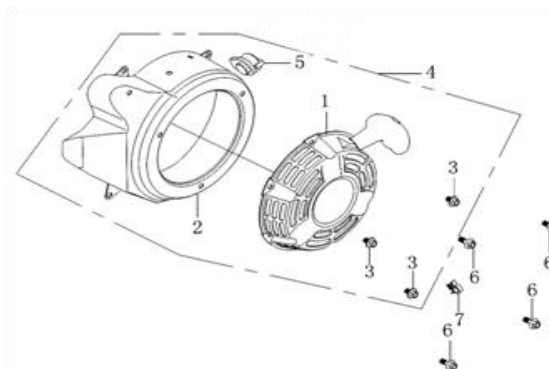
CRANKSHAFT/PISTON/CONNECTING ROD)		
No.	Description	Reqd. QTY
LC152F-1-D01	Piston ring combination	1
LC152F-1-D02	Steel cable baffle ring	2
LC152F-1-D03	Piston	1
LC152F-1-D04	Piston pin	1
LC152F-1-D05	Connecting rod	1
LC152F-1-D06	crankshaft	1
LC152F-1-D07	Key	1



(GAS DISTRIBUTION ADJUSTMENT)		
No.	Description	Reqd. QTY
LC152F-1-E01	Valve rocker combination	2
LC152F-1-E02	Plate, push rod guide	1
LC152F-1-E03	Push rod	2
LC152F-1-E04	Lifter, Valve	2
LC152F-1-E05	Camshaft assy	1
LC152F-1-E06	Valve adjustment cap	2
LC152F-1-E07	Retainer, valve spring	2
LC152F-1-E08	Inner spring of valve	2
LC152F-1-E09	Valve Kit	1

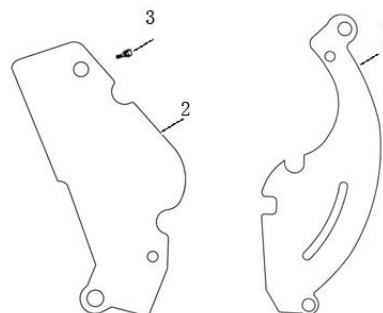


(STARTER SUBASSEMBLY)		
No.	Description	Reqd. QTY
LC152F-1-F01	Manual starting components	1
LC152F-1-F02	Fan cover comp.	1
LC152F-1-F03	Hexagon bolt with flange	3
LC152F-1-F04	Manual starting assembly	1
LC152F-1-F05	Stop switch	1
LC152F-1-F06	Hexagon bolt with flange	4



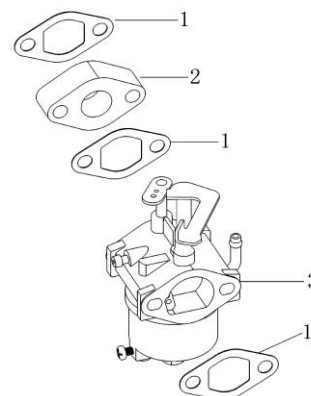
(DIVERSION ASSY.)		
No.	Description	Reqd. QTY
LC152F-1-G01	Side plate	1
LC152F-1-G02	Side plate	1
LC152F-1-G03	Hexagon bolt with flange	1

Technical drawing showing two side plates and a bolt. The left side plate (LC152F-1-G01) is shown with a hexagon bolt (LC152F-1-G03) labeled 3 and a feature labeled 2. The right side plate (LC152F-1-G02) is shown with a feature labeled 1.

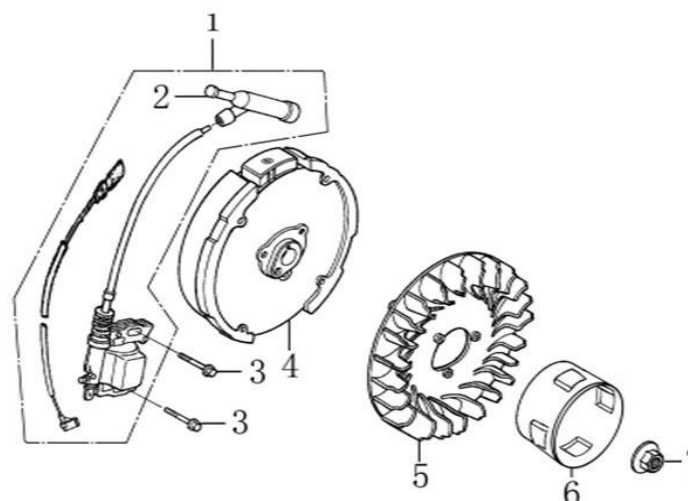


(CARBURETOR)		
No.	Description	Reqd. QTY
LC152F-1-H01	Carburetor gasket	3
LC152F-1-H02	Heat insulating pad for carburetor	1
LC152F-1-H03	Carburetor	1

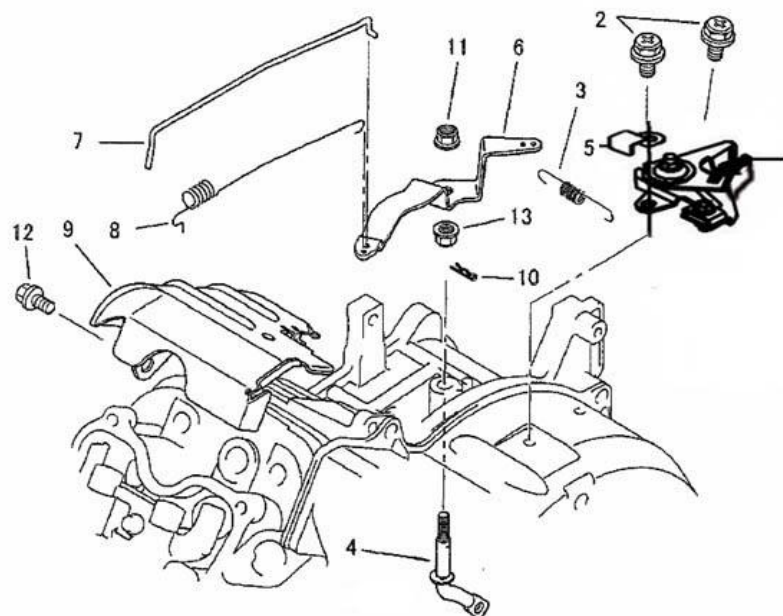
The diagram illustrates the assembly of a carburetor. It shows three gaskets (labeled 1) and one heat insulating pad (labeled 2) positioned above the carburetor body (labeled 3). The carburetor body is a complex mechanical part with various ports and a float bowl at the bottom. The gaskets are rectangular with rounded corners and two mounting holes. The heat insulating pad is a smaller, rectangular component. The carburetor body has a main body with a float bowl and a jet assembly on top.



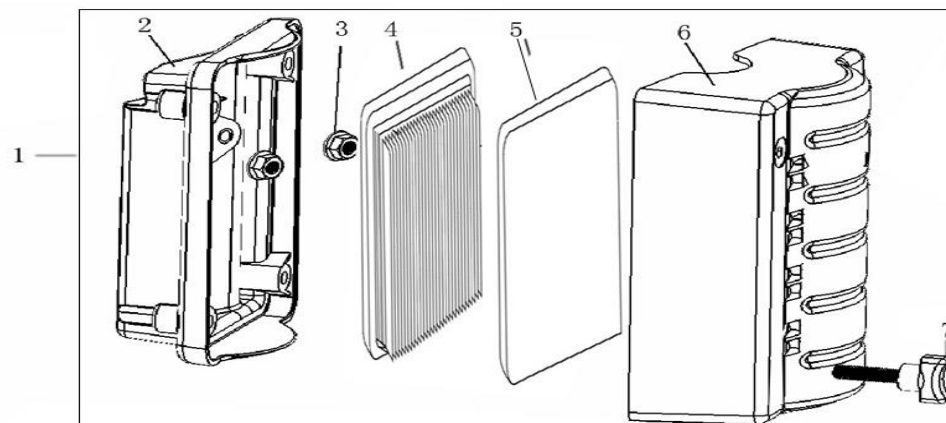
(FLYWHEEL/IGNITION COMP.)		
No.	Description	Reqd. QTY
LC152F-1-I01	COIL ASSY.,IGNNTION	1
LC152F-1-I02	Spark plug cap	1
LC152F-1-I03	Hexagon bolt with flange	2
LC152F-1-I04	FLYWHEEL COMP	1
LC152F-1-I05	Impeller	1
LC152F-1-I06	Starting disc	1
LC152F-1-I07	Hexagon nut with flange	1



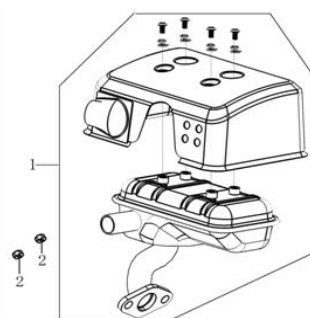
(CONTROL SYSTEM)		
No.	Description	Reqd. QTY
LC152F-1-J01	Throttle handle combination	1
LC152F-1-J02	Hexagon bolt with flange	2
LC152F-1-J03	Governing spring	1
LC152F-1-J04	Speed regulating arm	1
LC152F-1-J05	Cable cleat	1
LC152F-1-J06	Speed regulating bracket	1
LC152F-1-J07	Throttle rod	1
LC152F-1-J08	throttle return spring	1
LC152F-1-J09	air deflector	1
LC152F-1-J10	Pin clip	1
LC152F-1-J11	Hexagon nut with flange	2
LC152F-1-J12	Hexagon bolt with flange	1



(AIR CLEANER)		
No.	Description	Reqd. QTY
LC152F-1-K01	Air filter	1
LC152F-1-K02	Air filter seat	1
LC152F-1-K03	Hexagon nut with flange	2
LC152F-1-K04	Air filter element	1
LC152F-1-K05	Air filter element	1
LC152F-1-K06	Air filter casing cover	1
LC152F-1-K07	Lock bolt for air filter cover	1



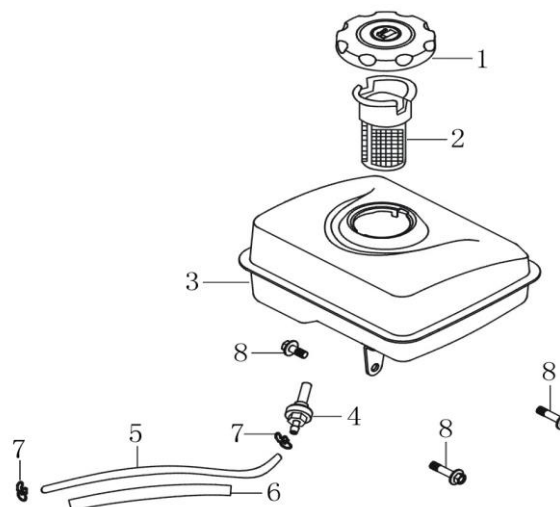
(MUFFLER)		
No.	Description	Reqd. QTY
LC152F-1-L01	Muffler	1
LC152F-1-L02	Hexagon nut	2





(FUEL TANK)		
No.	Description	Reqd. QTY
LC152F-1-M01	Tank cover	1
LC152F-1-M02		
LC152F-1-M03	Tank	1
LC152F-1-M04	Tank oilout	1
LC152F-1-M05	Oil tube	1
LC152F-1-M06	Protective sleeve	1
LC152F-1-M07	Pipe clip	2
LC152F-1-M08	Hexagon bolt with flange	3

The diagram illustrates the assembly of a fuel tank. At the top, a hexagonal bolt with a flange (1) is shown above a protective sleeve (2). Below these is the main tank body (3), which has a circular opening on top. To the right of the tank body, an oil tube (4) is shown with a pipe clip (7) attached to its side. Below the tank body, two more pipe clips (7) are shown, one of which is attached to a hexagonal bolt with a flange (8). At the bottom, two long, thin oil tubes (5 and 6) are shown, with a pipe clip (7) attached to one of them. The diagram uses numbered callouts to identify each component: 1 (hexagonal bolt with flange), 2 (protective sleeve), 3 (tank body), 4 (oil tube), 5 (oil tube), 6 (oil tube), 7 (pipe clip), and 8 (hexagonal bolt with flange).



Note: green color parts means same as Loncin LC154F engine